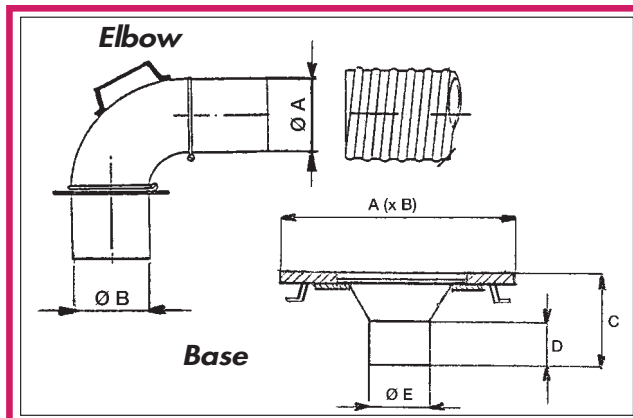




FLOOR TRAPS

"FLOOR-INSTALLED EXHAUST GAS EXTRACTION SYSTEMS"

Floor trap in tin-plated sheet steel equipped with elbow connection for external hoses above the floor. The PZ system is very economical, as it is not necessary to have a hose and nozzle for each trap, so that a single elbow connection can be moved where needed. For cars and commercial vehicles of medium power, we recommend the PZ 75 or PZ 100 model, and for lorries the PZ 125.

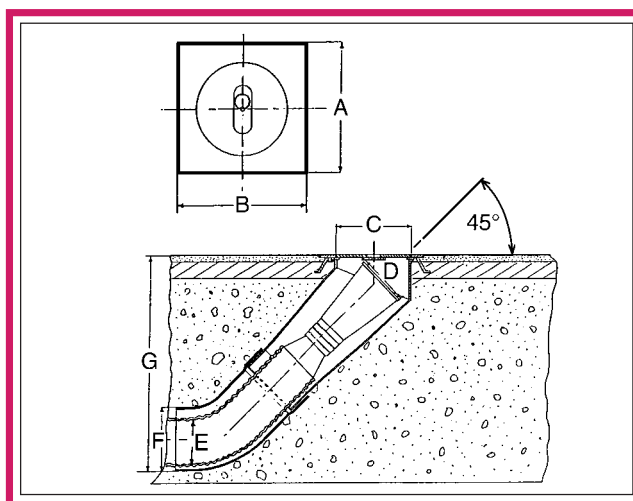
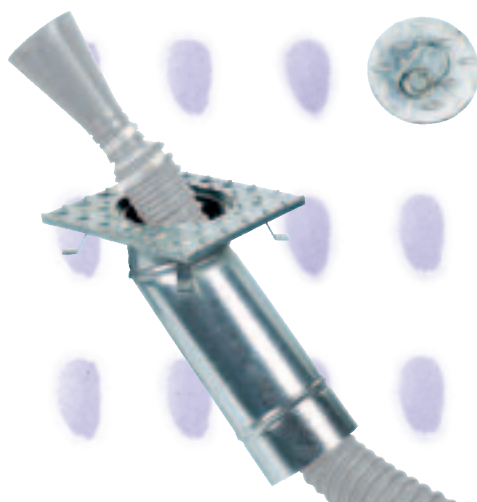


| Item | Ø A [mm] | Ø B [mm] | Item | A (x B) [mm] | C [mm] | D [mm] | Ø E [mm] |
|--------------|----------|----------|----------------|--------------|--------|--------|----------|
| FL 75 CURVA | 75 | 99 | FL 75/100 BASE | 260 | 120 | 68 | 106 |
| FL 100 CURVA | 100 | 99 | FL 125 BASE | 260 | 135 | 68 | 126 |
| FL 125 CURVA | 125 | 119 | FL 150 BASE | 350 | 155 | 68 | 156 |
| FL 150 CURVA | 150 | 149 | | | | | |

"FLOOR-INSTALLED EXHAUST GAS EXTRACTION SYSTEMS"

Floor trap in tin-plated sheet steel (10 mm thickness) equipped with elbow under the floor for use with internal hideaway hoses.

This under-floor elbow enables quick insertion of flexible hose and easy connection to the system piping in PVC. For cars and commercial vehicles of medium power, we recommend the POZ 80 model, and for lorries and tractor-trailers the POZ 180.



| Art. | A (x B) mm | Ø C mm | Ø D mm | Ø E mm | Ø F mm | G mm |
|---------|------------|--------|--------|-------------|--------|------|
| POZ 80 | 260 | 160 | 80 | 75 | 140 | 418 |
| POZ 180 | 350 | 250 | 180 | 100/125/150 | 200 | 582 |



LAYOUT PLANT WITH FLOOR TRAP TYPE "POZ"

